



## **User Instructions**

# **Revived Medical RM1000 Standard Standing Sling**

Class 1 Medical Device Manufactured to BS EN ISO 10535:2021

### **To Fit From a Seated Position**

### **Thoroughly Examine Sling Before Use.**

1. Before fitting remove square Velcro patch from body belt.
2. Ensure that the guiding handles and identification labels are on the outside.
3. The sling should be centred and aligned with the user's back.
4. Place the sling down the back of the user the aperture should sit above the waist line and the padded area should be under the users arms.
5. Place the body belt around the users torso and replace the Velcro fastener patch to the belt.
6. Close the belt firmly ensuring a comfortable fit and clip together the two plastic buckles on the webbing belt. Pull to adjust the belt tension. Check the sling is positioned equally with the padded area under the users arms.
7. The loop selection of each strap should be in accordance to a moving handling plan written by a competent person. Lifting straps can contain differing quantities of loops in various colours, the loop closest to the body of the sling will always be identified as number 1.
11. Attach the lifting straps to the hoist spreader bar making sure you have the correct sling for the correct spreader bar. Loops use hook style spreader bar. Clips use stud style spreader bar.
12. To remove the sling carry out instructions in reverse taking care to avoid skin friction.
13. If in doubt seek advice from your Moving and Handling consultant.

**Revived Medical UK Ltd. Unit 7 NEP Business Park, Washington, NE38 8QP, UK.**

**Tel: 0191 4159900**

**E: [admin@revivedmedicaluk.com](mailto:admin@revivedmedicaluk.com)**

**W: [www.revivedmedicaluk.com](http://www.revivedmedicaluk.com)**

## EXAMINATION AND INSPECTION OF SLING

### CAUTION

Before every lift visually examine the slings structural integrity. If there is any sign of excessive damage to the fabric or straps **DO NOT USE THE SLING.**

### GENERAL EXTERNAL WEAR

In normal use this is unavoidable and is shown by fluffiness to the surface fibres. This may be caused by sharp edges on straps or hook and loop fastener. This is harmless unless it becomes too extensive. Normal material condition is smooth or flat.

### LOCAL ABRASION IN THE WEBBING STRAPS

This may be caused by the passage of the webbing over the sharp edges whilst under tension or hook and loop fastener. Slight damage to the outer fibres may be considered safe but in severe cases this should lead to instant rejection of the product.

### CUTS, HOLES OR BURNS

These are dangerous and must lead to instant rejection of the product.

### EXAMINATION OF STITCH PATTERNS

Examine the stitch patterns for broken, worn, pulled or unravelled stitches. Reject any product where the thread has become subject to excessive abrasion or broken stitches.

### WASHING INSTRUCTIONS

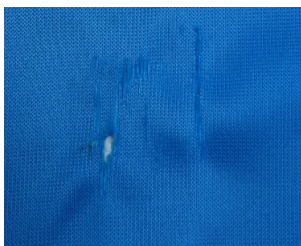
Each sling can be laundered up to 85°C using a mild soap solution and then rinse. Slings will air dry quickly in a warm room or in the normal manner. Tumble dry on low setting only. **Do not** place over a convector heater or steam pipes. **Do not** use Biological detergents. **Do not** use Bleach. **Do not** use strong chemicals. A faded label is an early indicator that sling is subject to harsh /abrasive cleaning methods do not continue to use sling. All slings fitted with a hook and loop fastener body belt should have the hook and loop fastener square removed or body belt closed. This will significantly extend the lifespan of the product.

### SAFE WORKING LOAD - DO NOT EXCEED THE SAFE WORKING LOAD

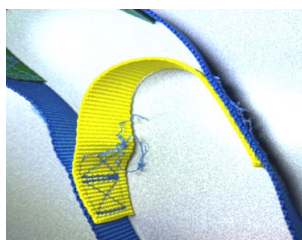
Spacer - 300kg | Poly - 400kg | Mesh 300kg | Parachute 200kg | Ultra Fine 100kg | Spacer Light 100kg

### SLING INSPECTION

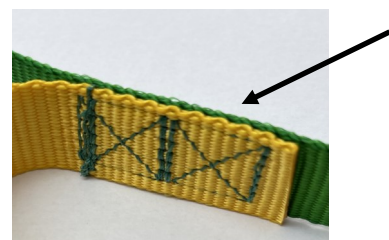
Each product should be inspected prior to use and with your six month or annual hoist inspection. This is in line with LOLER (Lifting Operations and Lifting Equipment Regulations). Please check the sling label.



**DO NOT USE**



**DO NOT USE**



Critical stitch area **THIS MUST BE INTACT**

Revived Medical UK Ltd. Unit 7 NEP Business Park, Washington, NE38 8QP, UK.

Tel: 0191 4159900

E: [admin@revivedmedicaluk.com](mailto:admin@revivedmedicaluk.com)

W: [www.revivedmedicaluk.com](http://www.revivedmedicaluk.com)