



User Instructions

Revived Medical RM0700 In Chair Hammock Pommel Sling

Class 1 Medical Device Manufactured to BS EN ISO 10535:2021

Thoroughly Examine Sling Before Use.

Please Note this sling should only be applied and removed from a lying position.

To Fit From Lying Position

1. Before commencing ensure user is comfortable and maybe introduce a pillow.
2. Roll the user to one side using a suitable rolling technique.
3. Lie the sling flat with the label facing down onto the lifting surface (bed). The bottom edge of the sling should be in line and behind the knees. The top should be in line with the shoulder. Tuck the sling half nearest the user towards the user and underneath them.
4. Roll the user to the other side revealing the previously tucked in half of the sling.
5. Pull out the sling and ensure the sling is flat and even.
6. Roll the user onto their back and ensure the sling is positioned correctly and centred. If hoisting from a profile bed position the user into a seated position if possible.
7. Feed the long right outer leg strap through the short right loop on the pommel. Repeat feeding the long left outer strap through the short left loop on the pommel.
8. Ensure the sling is square and aligned correctly before fitting straps to hoist. The loop selection of each strap should be in accordance to a moving handling plan written by a competent person. Lifting straps can contain differing quantities of loops in various colours, the loop closest to the body of the sling will always be identified as number 1.
11. Attach the leg lifting straps followed by the shoulder straps to the hoist spreader bar making sure you have the correct sling for the correct Loops use hook style spreader bar. Clips use stud style spreader bar.
12. To remove the sling carry out instructions in reverse taking care to avoid skin friction.
13. If in doubt seek advice from your Moving and Handling consultant.

Revived Medical UK Ltd. Unit 7 NEP Business Park, Washington, NE38 8QP, UK.

Tel: 0191 4159900

E: admin@revivedmedicaluk.com

W: www.revivedmedicaluk.com

EXAMINATION AND INSPECTION OF SLING

CAUTION

Before every lift visually examine the slings structural integrity. If there is any sign of excessive damage to the fabric or straps DO NOT USE THE SLING.

GENERAL EXTERNAL WEAR

In normal use this is unavoidable and is shown by fluffiness to the surface fibres. This may be caused by sharp edges on straps or hook and loop fastener. This is harmless unless it becomes too extensive. Normal material condition is smooth or flat.

LOCAL ABRASION IN THE WEBBING STRAPS

This may be caused by the passage of the webbing over the sharp edges whilst under tension or hook and loop fastener. Slight damage to the outer fibres may be considered safe but in severe cases this should lead to instant rejection of the product.

CUTS, HOLES OR BURNS

These are dangerous and must lead to instant rejection of the product.

EXAMINATION OF STITCH PATTERNS

Examine the stitch patterns for broken, worn, pulled or unravelled stitches. Reject any product where the thread has become subject to excessive abrasion or broken stitches.

WASHING INSTRUCTIONS

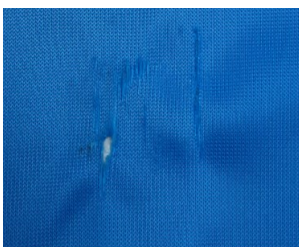
Each sling can be laundered up to 85°C using a mild soap solution and then rinse. Slings will air dry quickly in a warm room or in the normal manner. Tumble dry on low setting only. **Do not** place over a convector heater or steam pipes. **Do not** use Biological detergents. **Do not** use Bleach. **Do not** use strong chemicals. A faded label is an early indicator that sling is subject to harsh /abrasive cleaning methods do not continue to use sling. All slings fitted with a hook and loop fastener body belt should have the hook and loop fastener square removed or body belt closed. This will significantly extend the lifespan of the product.

SAFE WORKING LOAD - DO NOT EXCEED THE SAFE WORKING LOAD

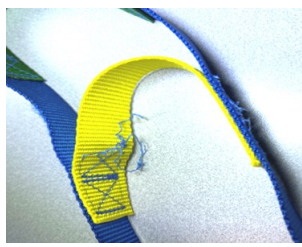
Spacer - 300kg | Poly - 400kg | Mesh 300kg | Parachute 200kg | Ultra Fine 100kg | Spacer Light 100kg

SLING INSPECTION

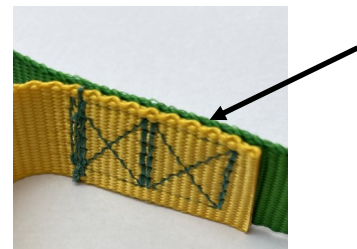
Each product should be inspected prior to use and with your six month or annual hoist inspection. This is in line with LOLER (Lifting Operations and Lifting Equipment Regulations). Please check the sling label.



DO NOT USE



DO NOT USE



Critical stitch area **THIS MUST BE INTACT**

Revived Medical UK Ltd. Unit 7 NEP Business Park, Washington, NE38 8QP, UK.

Tel: 0191 4159900

E: admin@revivedmedicaluk.com

W: www.revivedmedicaluk.com